

**Critical Finding**

During a normally scheduled inspection the Team Leader discovers a:

- Substantial problem with a Fracture Critical Member*
- Scour or Hydraulic problem*
- Substantial traffic safety hazard*
- Substantial reduction in Load Capacity OR*
- A "2-Critical" Summary Condition rating (note that a "2-Critical" is generally associated with a safety or weight restriction on the bridge)*

that requires immediate protective or corrective action

**Personnel**

The three positions referenced (Team Leader, Control Authority Program Manager and Reviewer) are separate individuals in this process, however, these roles may be filled by the same person

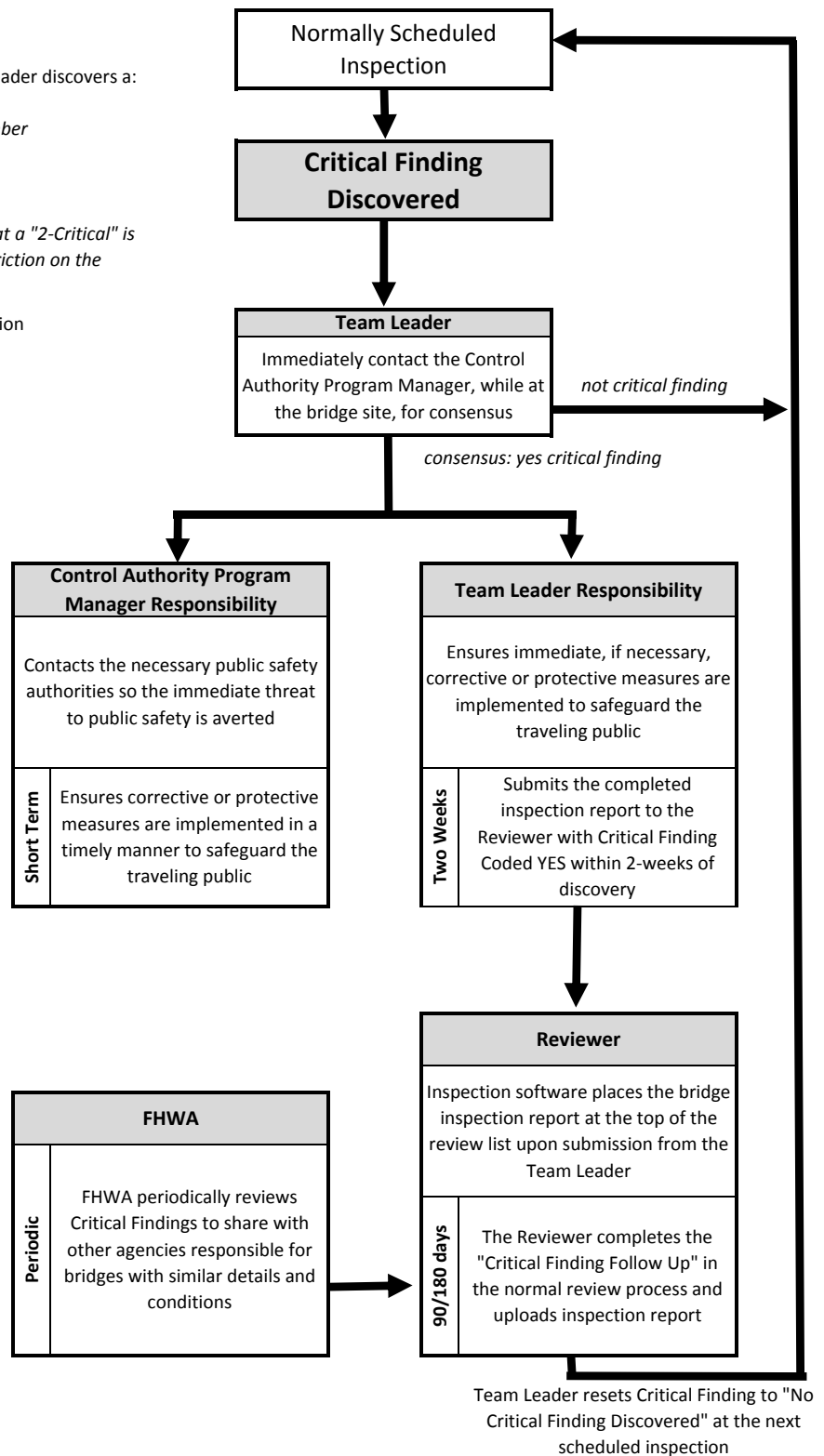
**Protective or Corrective Measures**

Protective or corrective measures will vary depending upon many factors. The remedy may involve one or several steps to regain the serviceability of the structure. Examples of appropriate "Immediate" actions may include but are not limited to any combination of the following:

- Immediate permanent closure*
- Immediate temporary closure*
- Immediate lane closure*
- Emergency repairs*
- Set interval for follow-up inspections*

Examples of appropriate "Short Term" actions may include but are not limited to any combination of the following:

- Load rating with Weight Posting*
- Temporary shoring*
- Emergency repairs*
- Contract for permanent repairs*
- Follow up inspections*



Team Leader resets Critical Finding to "No Critical Finding Discovered" at the next scheduled inspection