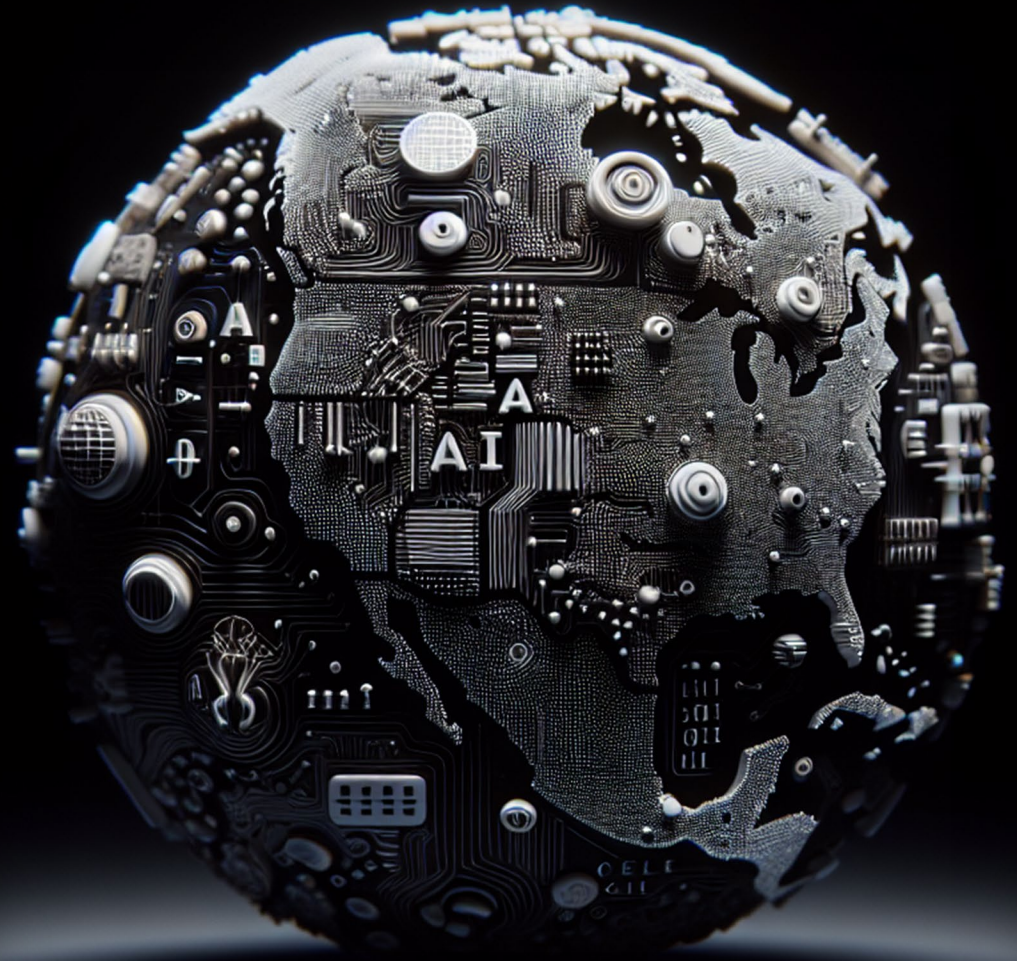


AI 101

Thursday, December 4th

3:30 – 4:00 PM EST



CCAO | AI Workshop Agenda

Agenda and Topics

TIME	MODULE	Presenter	ACTIVITY DESCRIPTION
3:30 – 3:40 <i>10 min</i>	AI & GENAI 101	AD Desai	Provide level-setting and overview of AI, including the difference between AI and GenAI, foundational elements of the technology and an overview of AI Risk and Governance.
3:40 – 4:00 <i>20 min</i>	PeoplePrism Demo	Mike Daggitt	Overview of advanced analytics & AI platform & interactive demo of solution
4:00 – 4:30 <i>30 mins</i>	Hands On AI Training	AI Owl	Interactive session on the application of AI Tools in day-to-day

Introduction



Meet the Presenters



Adarsh (AD) Desai
Deloitte AI & Data Leader for Ohio



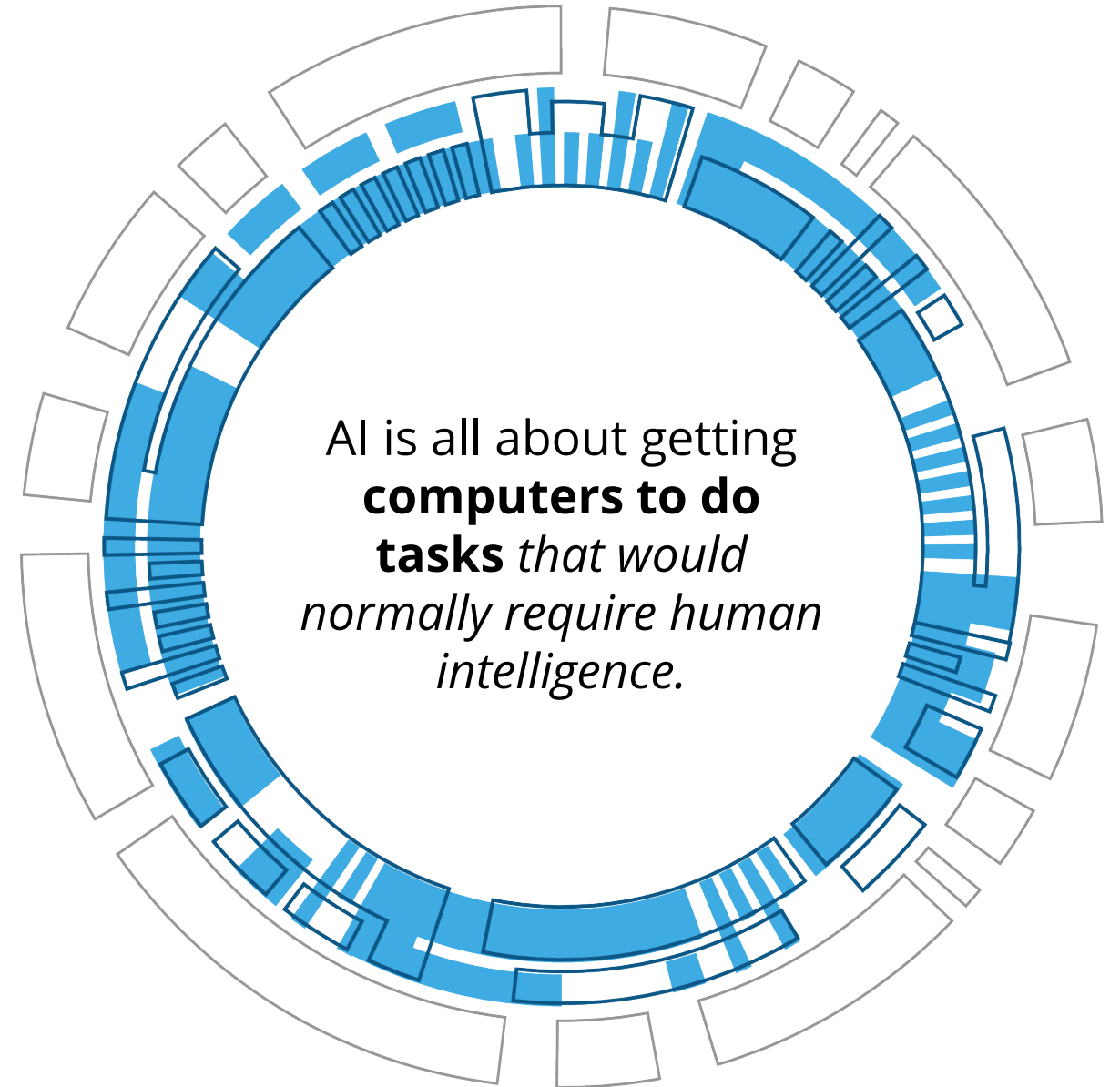
Mike Daggitt
People Prism Leader

What is Artificial Intelligence?

A SIMPLE DEFINITION

Artificial intelligence (AI) is the capability of a computer program, using math and logic, to **simulate human cognitive functions** like:

- ✓ Mimicking human cognitive functions
- ✓ Gathering information and solving problems
- ✓ Using math and logic to simulate reasoning
- ✓ Learning from new information and making decisions
- ✓ Generating new content



Spectrum of AI Capabilities

Predict

Includes comprehensively analyzing large amounts of detailed data to identify high-impact patterns and trends to generate a series of predicted or possible outcomes.

Movie recommendations



Interpret

Includes reading documents, converting text and speech into data, and deriving language analysis from that data.

Auto-generated News or Captions



Simulate

Includes creating a virtual representation that serves as a real-time digital counterpart of a physical object or process, a technique called "digital twin."

'Try On At Home' AR



Automate

Includes executing processes that require little human judgment or intervention.

Email Autocomplete

Hope ...all is well.

Detect

Includes identifying objects and patterns through the analysis of documents, pictures, and video streams.

Airport Security using Eye Scanner



Interact

Includes engaging with humans in real-time, two-way communication, acting as a virtual assistant.

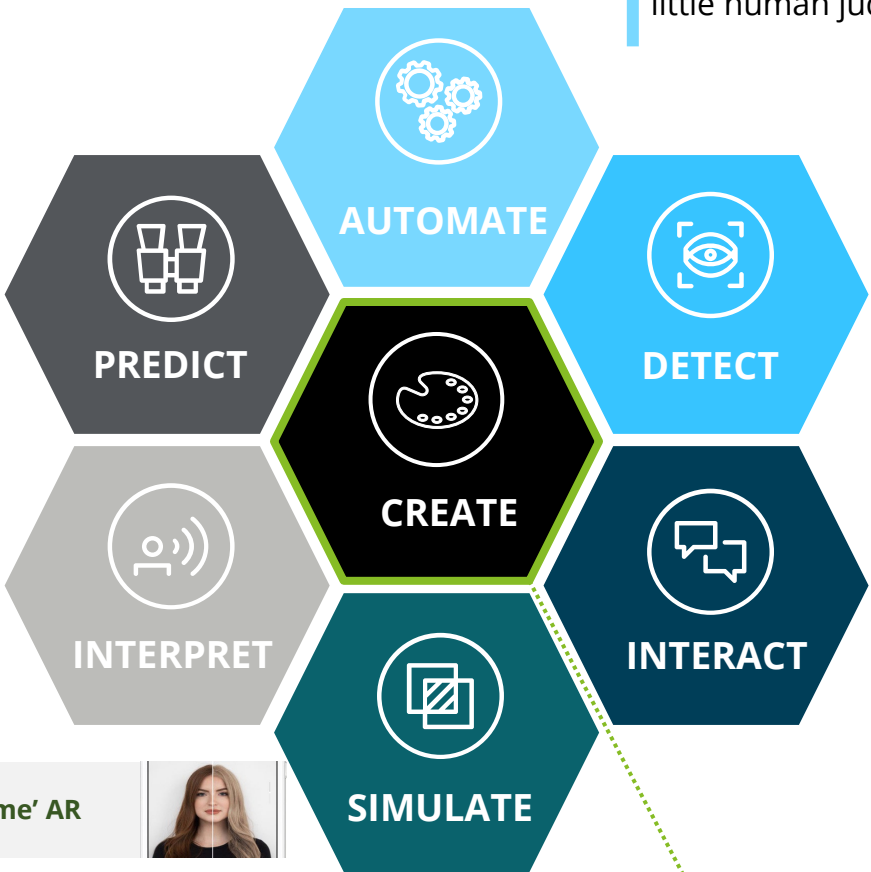
Smart Assistants



Create

Includes generative capabilities to create new content in text, images, audio, videos, and simulations.

Generated Art

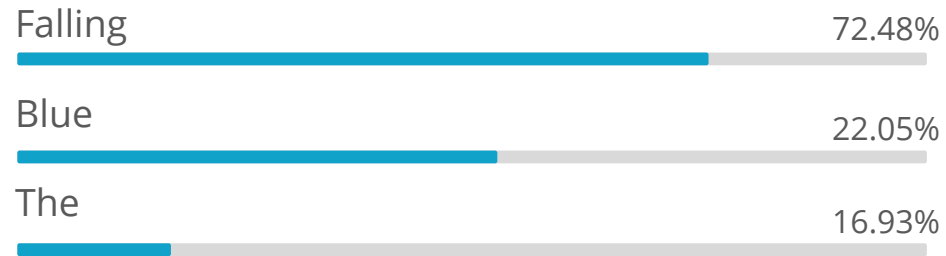


What is a Large Language Model (LLM)?

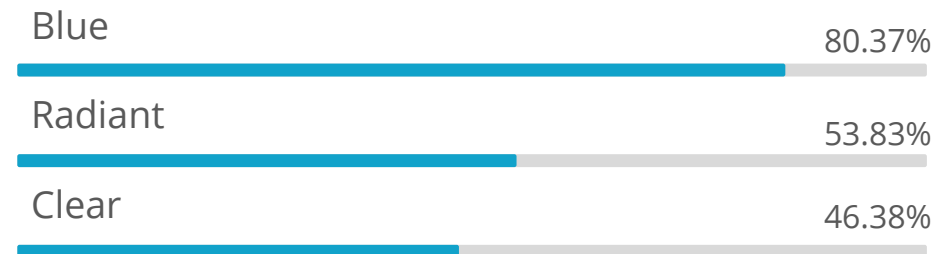
A **Language Model** is a probability distribution over sequences of words.

Given a **sequence of words**, a language model **predicts words** that are **likely to follow**:

The sky is



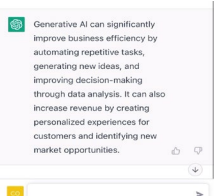
The sun is shining, the sky is



Generative AI (GenAI) Capabilities

Text

Prompt: Explain the business impact of Generative AI in 50 words



Video

Prompt: Create a video of a teddy bear painting a portrait



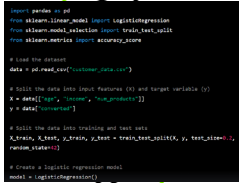
Image

Prompt: A bowl of soup that is a portal to another dimension as digital art



Code

Prompt: In python, code a program that predicts the likelihood of customer conversion



Audio

Generative AI-powered customer service agents

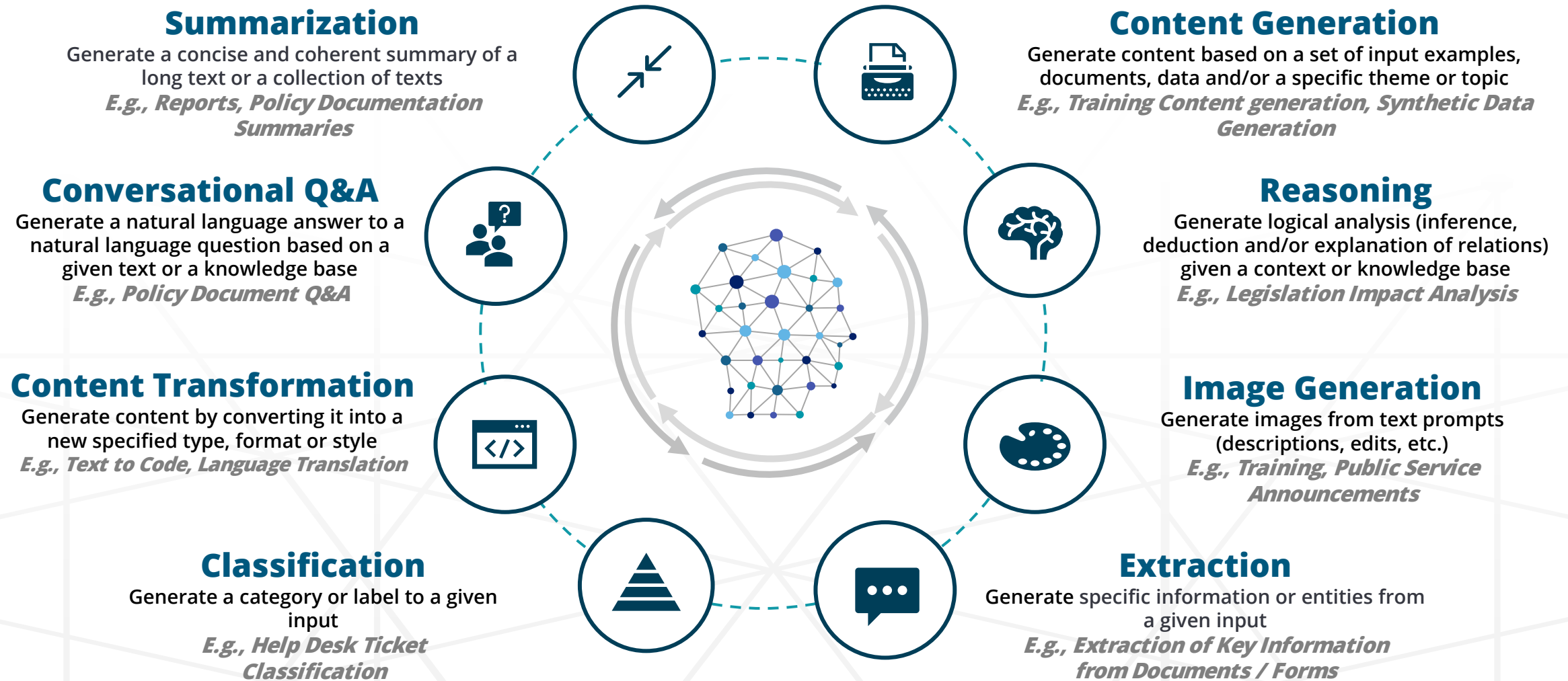
- Phone / Voice
- Multi-Lingual
- Multiple Tasks
- Empathy / Humor
- Ensures Resolution
- Systems Integration

3D

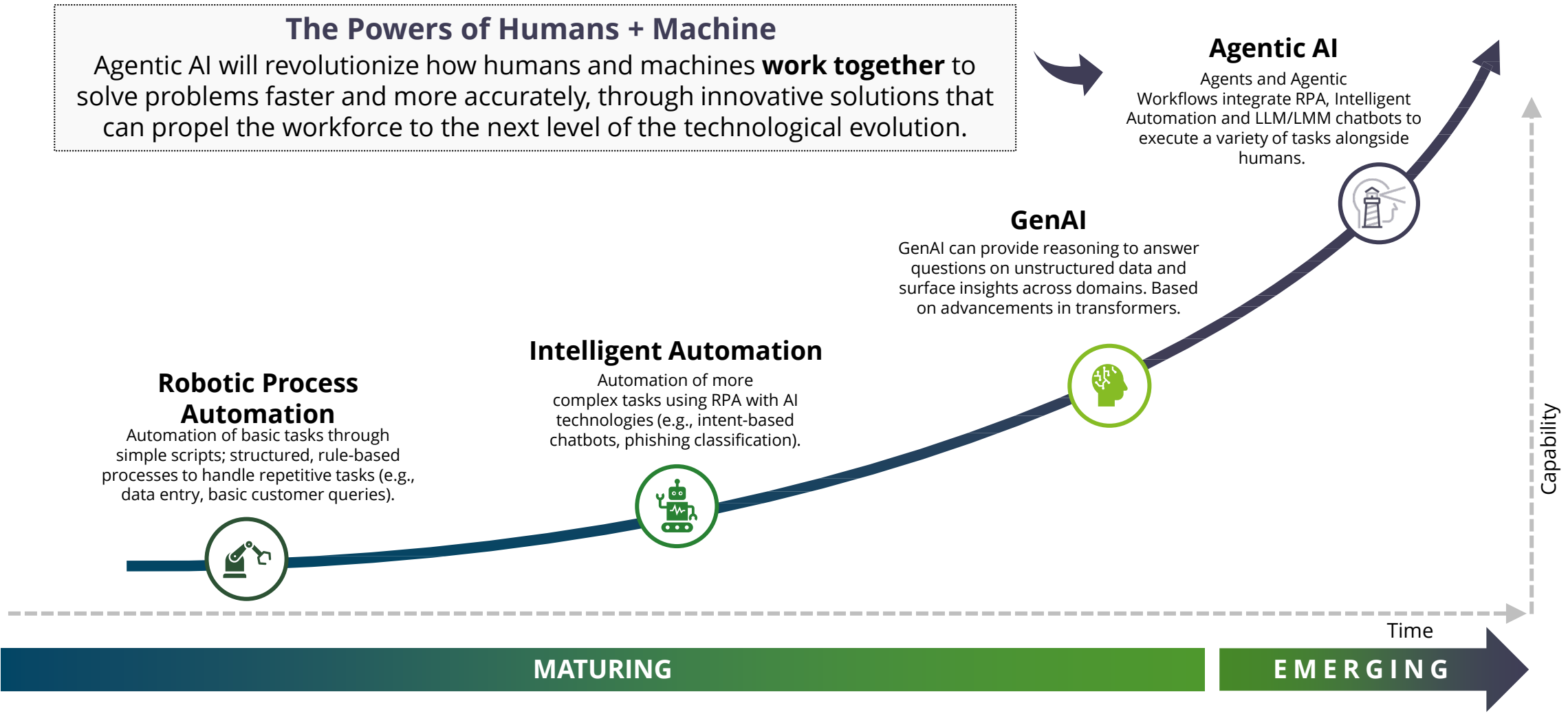
Prompt: A beautiful dress made out of garbage bags, on a mannequin. Studio lighting, high quality, high resolution.



Potential Uses of GenAI



The Evolution of AI Capabilities



PeoplePrism™

Please contact Mike Daggitt
(mdaggitt@deloitte.com) if you'd
like to have a follow-up.



About PeoplePrism™

PeoplePrism use **predictive analytics**, **geospatial capabilities**, and the largest known **population insights dataset** to provide unique and compelling insights into people, places, and environmental impact.

DATA

12.5M

Ohio Adults

4.9M

Ohio Households



Customizable Personas & Outreach Playbooks

1,700+

Lifestyle Variables

Data is refreshed
every month



Granular reporting options
include **households**,
neighborhoods, and **counties**



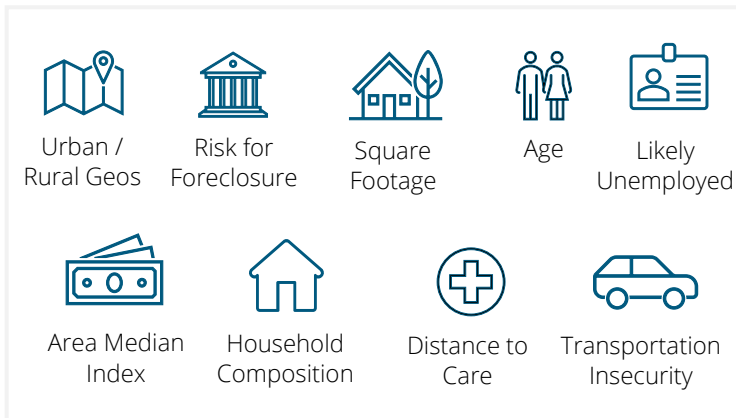
10+

Years of history

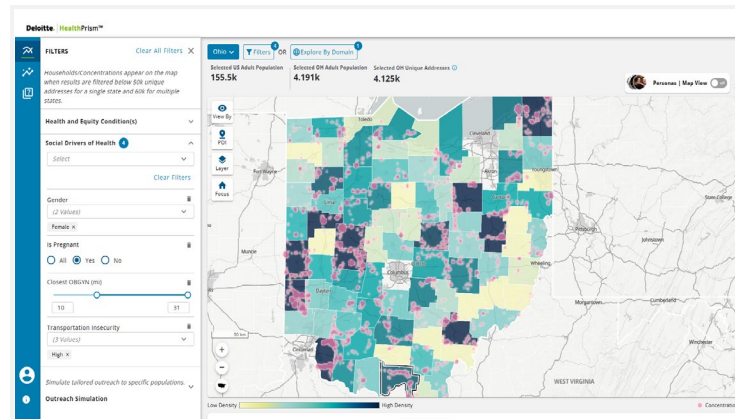


REPRESENTATIVE CAPABILITIES

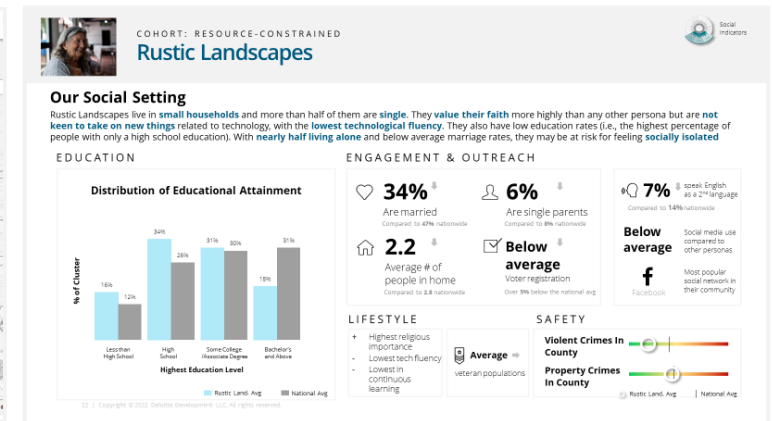
Contextual Data Layers



Analytics and Dashboarding



Outreach & Engagement



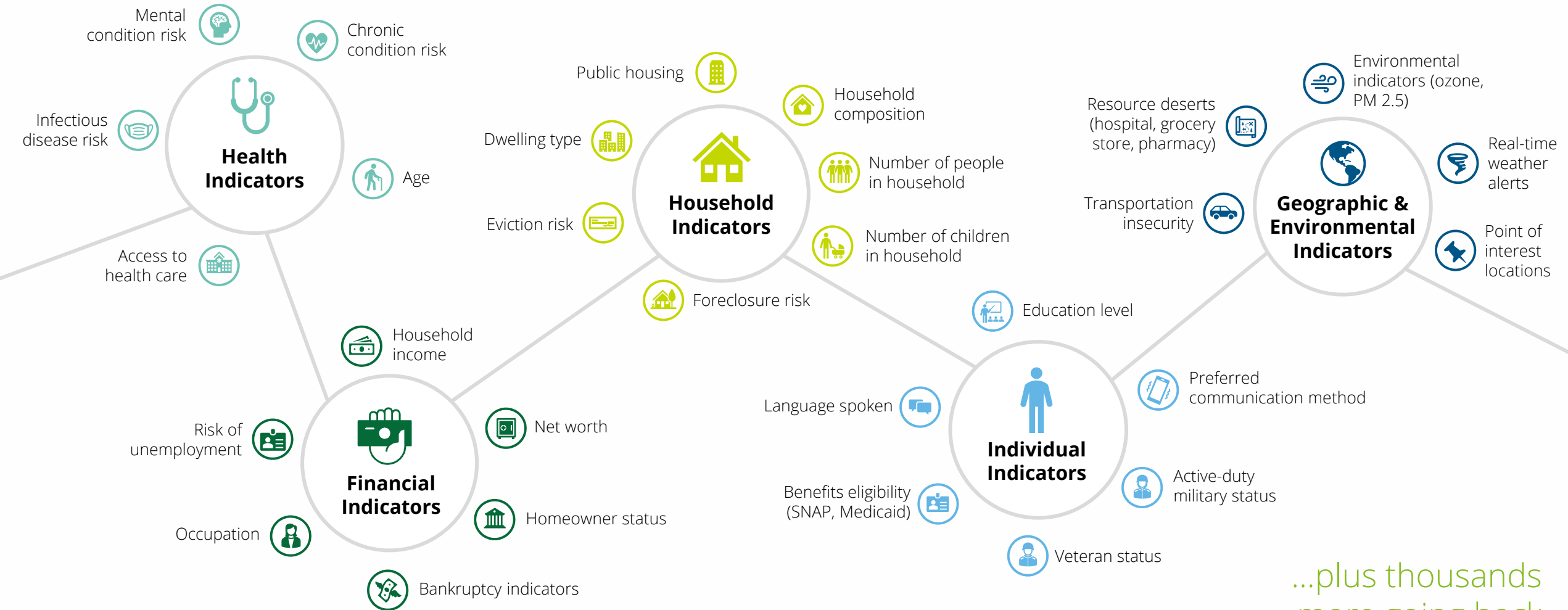
Use powerful insights in PeoplePrism to interconnect and draw meaningful conclusions across multiple use cases

STATE & COUNTY GOVERNMENT DOMAINS

SAMPLE USE CASES

Public Health	Behavioral Health	Human Services	Medicaid	Family Assistance
Healthcare <ul style="list-style-type: none"> Analyze supply and demand to improve <i>health care access and utilization</i> Inform <i>specialty-specific resource allocation</i> (e.g., obstetrics, oncology, cardiology, neurology) Maternal & Infant Health <ul style="list-style-type: none"> Reduce <i>NAS births</i> Improve <i>maternal care access and utilization</i> Rural Health <ul style="list-style-type: none"> Identify citizens at elevated risk for adverse health outcomes living in rural areas with a distressed healthcare system 	Substance Use Disorder <ul style="list-style-type: none"> Analyze supply and demand to improve <i>SUD treatment access and utilization</i> Implement more <i>targeted preventative measures</i> for specific substance use disorders Mental Health <ul style="list-style-type: none"> Find populations at <i>high risk for depression</i> Improve <i>mental health services access and utilization</i> 	Eligibility & Enrollment <ul style="list-style-type: none"> Discover those <i>eligible-but-not-enrolled in benefits</i> (e.g., SNAP, TANF, WIC, LIHEAP) Affordable Housing <ul style="list-style-type: none"> Identify those who are at risk for losing their home due to <i>foreclosure or eviction</i> Identify those living in overcrowded housing with the financial means to move to a larger dwelling, freeing up capacity for those seeking their first starter home. 	Eligibility & Enrollment <ul style="list-style-type: none"> Conduct <i>targeted outreach</i> to mitigate disenrollment due to more timely redeterminations and work requirements Improve <i>Medicaid & Medicare services utilization</i> Discover <i>pathways to self-sufficiency</i> Veteran Transition <ul style="list-style-type: none"> Identify Veterans utilizing Medicaid and willing to transition to VA healthcare to <i>save on Medicaid spend and move Veterans to a more tailored set of services</i> 	Child Care <ul style="list-style-type: none"> Expand access in <i>childcare and daycare availability deserts</i> Child Welfare <ul style="list-style-type: none"> Increase <i>foster home recruitment</i> Food Insecurity <ul style="list-style-type: none"> Discover those <i>eligible but not enrolled for free and reduced school lunches</i> Analyze supply and demand to improve <i>food source</i> (e.g., grocery stores, food pantries) access and utilization
← Health Outcomes		Eligibility & Enrollment	Program Evaluation →	

PeoplePrism Data Categories



...plus thousands more going back 10 years in time

Questions?

