

Bridging the Mobility Gap: Innovation in Transportation

2024 CCAO/CEAO Winter Conference

December 5, 2024





Mr. Andy Volenik

Mr. Andy Volenik has been the Executive Director of Delaware County Transit since October 2022, and since then has steadily implemented changes that have led to DCT having record-breaking ridership. Starting his career in 2009 as a Bus Operator at COTA, Andy has spent the last 15 years serving central Ohio in various leadership roles within the transportation industry. Andy's proudest achievement is raising his daughters, Camryn, Elaina, and Josephine in Delaware with his best friend and amazing partner of nearly 20 years, Amanda.

Mr. Howard Stewart

Mr. Howard Stewart has more than eight years of experience as the Transit Director and Board Secretary/Treasurer of South East Area Transit (SEAT). SEAT is a two-county public transportation system serving Muskingum and Guernsey counties. He is responsible for ensuring safe, efficient, affordable public transportation to meet the citizens' needs who desire to use the SEAT services. Before joining South East Area Transit, Mr. Stewart worked as the Executive Director of a small non-profit that provided daily programs, and community needs to adults and youth in Zanesville, Ohio. Mr. Stewart holds a degree from Findlay College, has 30 years of experience collaborating with local government, businesses, and human service agencies to better the community.

Transit/Mobility Systems Across the State

Types of transit systems:

- Large Urban:
 - ❖ GCRTA, COTA, SORTA
- Small Urban:
 - ❖ Middletown, Springfield City Area Transit, etc.
- Rural Systems:
 - ❖ SEAT, Knox Area Transit, North Central Area Transit, etc.

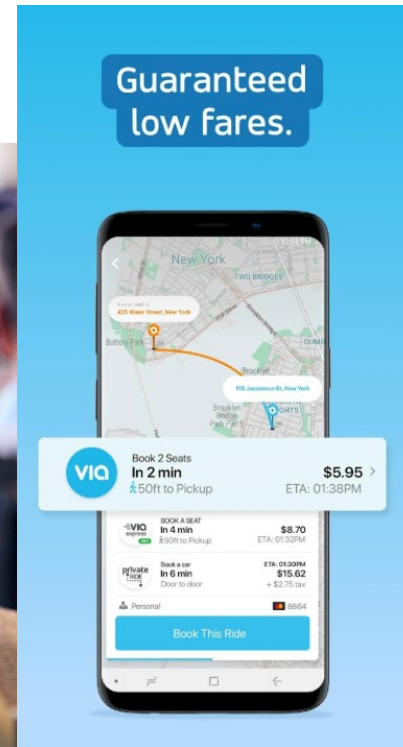
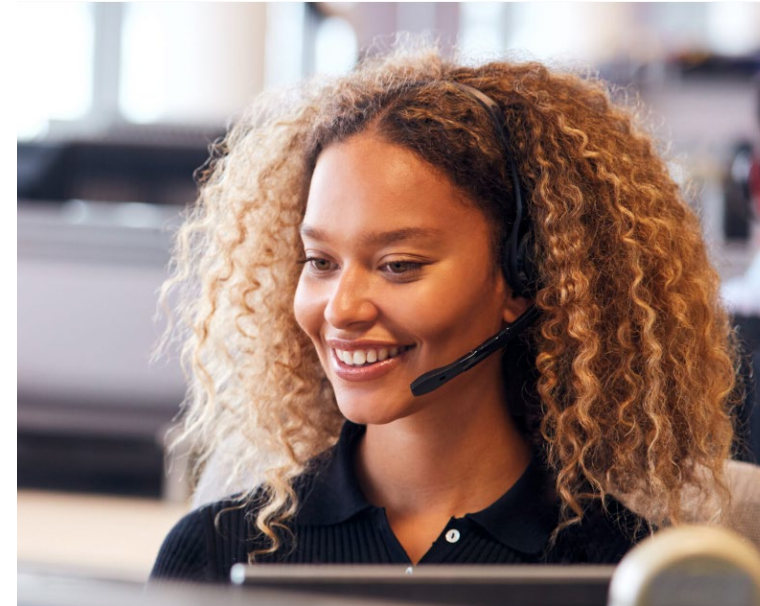


Mobility Options and Funding

- Local Funds
- Federal Funds: Formula funds and competitive grants
- State Funds: UTP, RTP, SUB, and OTP2
- Non-Emergency Medical Trips (NEMTs)
- Local contracts for specified services e.g. Veteran's Services, COAAA
- Fare
- Investment Programs
- Ads and other atypical revenue sources

Common Themes Across Communities

- Mobility options need to innovate
- Customer service and ease of use
- Moving systems toward equity and accessibility
- Economic advancement
- Aging in place

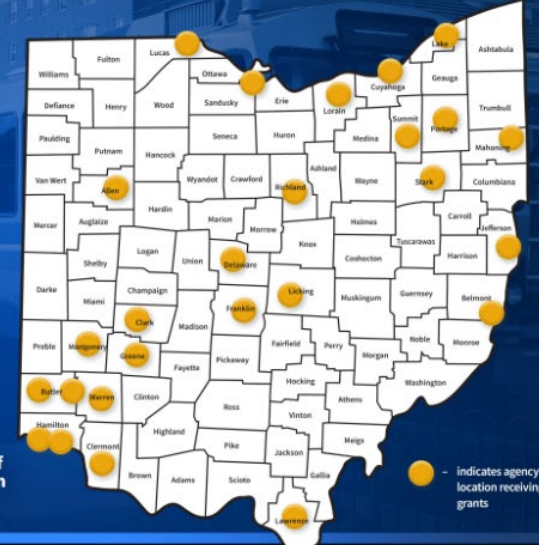


Ohio Urban Transit Grants

\$23.1 million

to 26 Urban Transit Agencies

Akron	Columbus	Lorain-Elyria	Stuebenville
Belmont County	Dayton	Mansfield	Toledo
Butler County	Delaware County	Middletown	Warren County
Canton	Greene County	Newark	Youngstown
Cincinnati (2)	Lake County	Portage County	
Clermont County	Lawrence County	Sandusky-Port Clinton	
Cleveland	Lima	Springfield	



MIKE DEWINE
GOVERNOR OF OHIO



Department of
Transportation

— indicates agency
location receiving
grants



Delaware County

Delaware County

Population of 213,554 in 2020

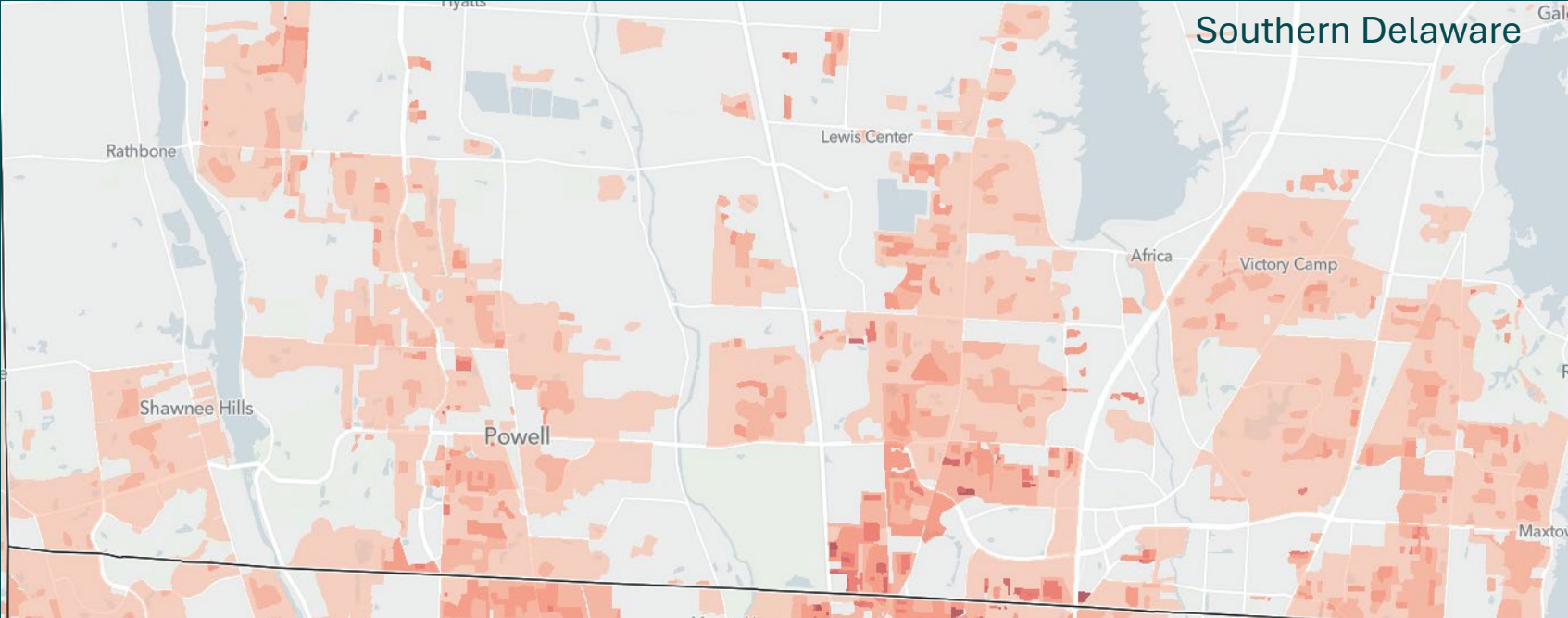
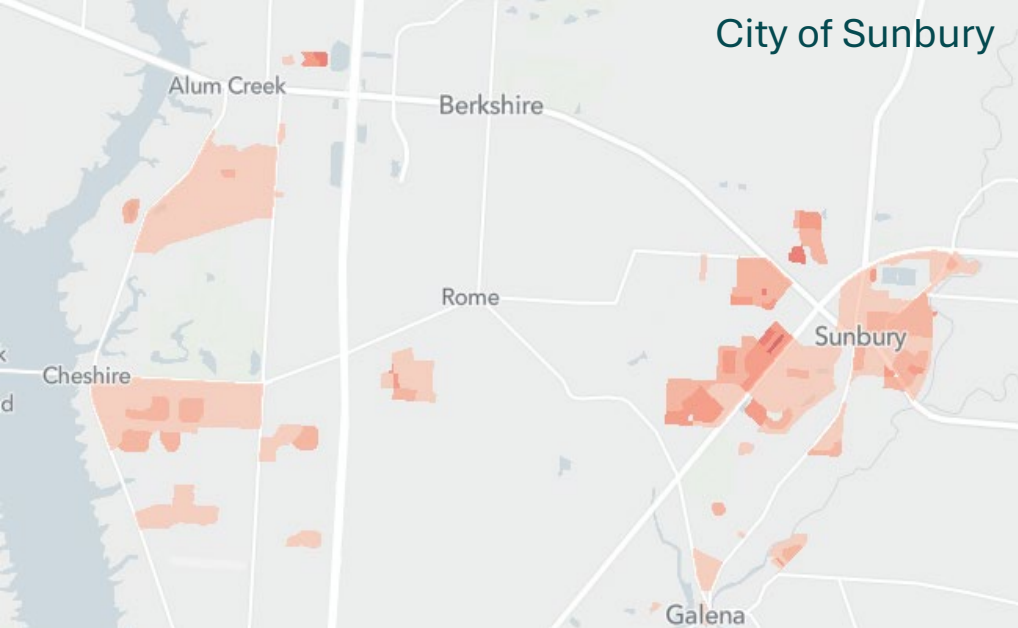
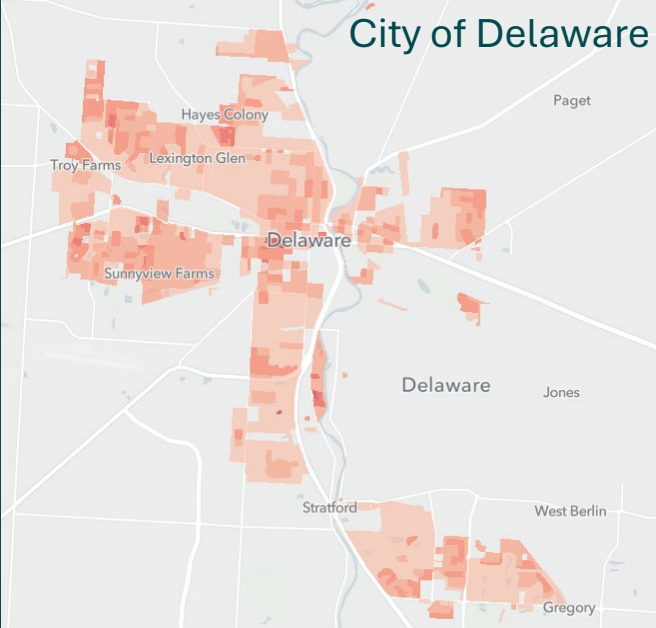
- Increasing population
- 456 square miles
- MORPC projections indicate population growth of 80% by 2050

Activity Centers and Job Markets

- Ohio Wesleyan University and Columbus State Delaware Branch
- Olentangy School System
- Polaris Shopping Center and Tanger Outlet Mall
- US 23 Corridor
- Adjacent to Columbus/Franklin County



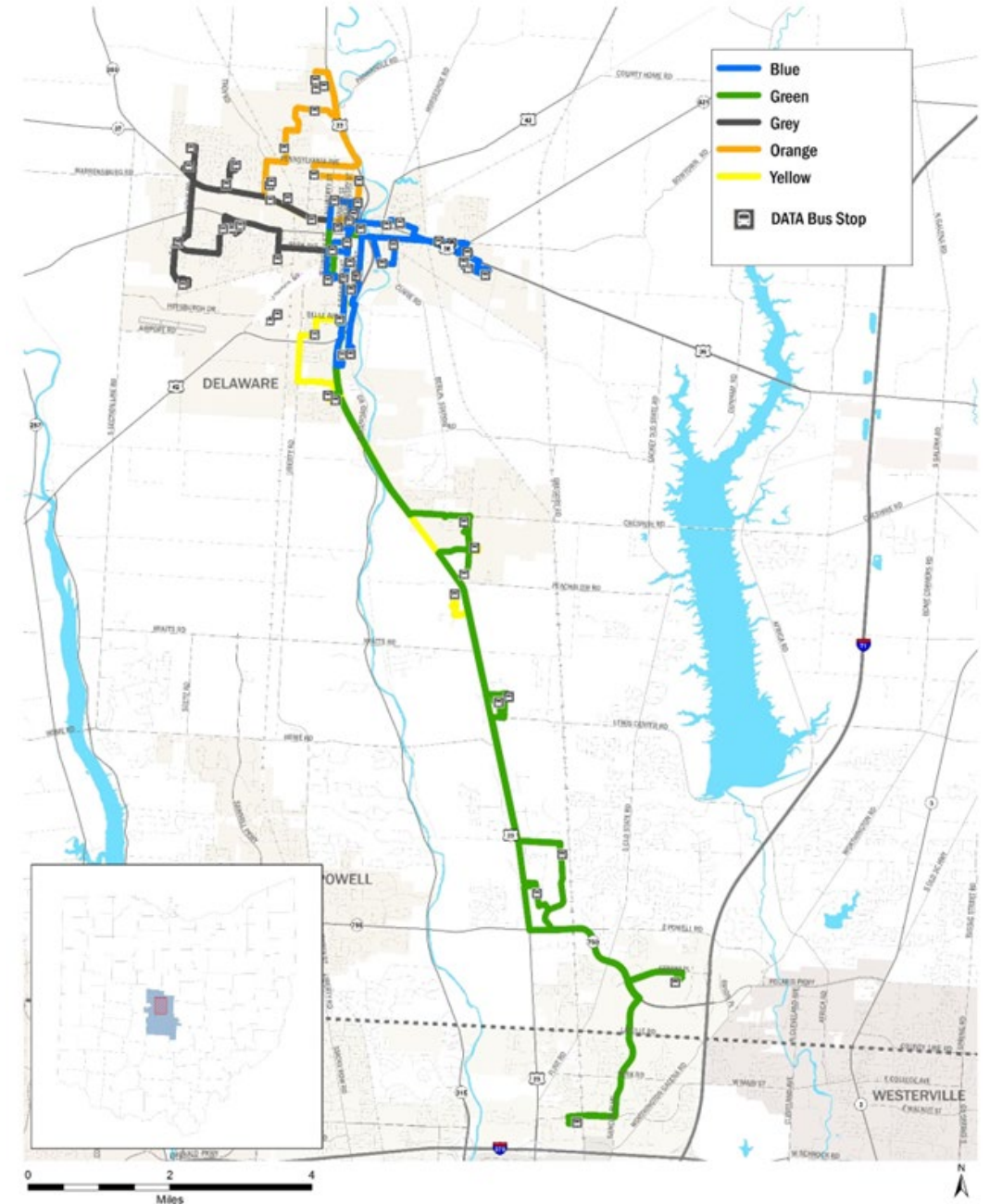
Population Areas



History of DCT

Fixed route system from ~1996 - 2020

- 5 routes
- Limited countywide service
- 73,000 trips in 2019
- Governed by DCT Board (7 members)
- Green route direct connection to COTA Crosswoods Park and Ride
- Changed from rural to large transit in 2014



FLEX Service Model

*FLEX*Service

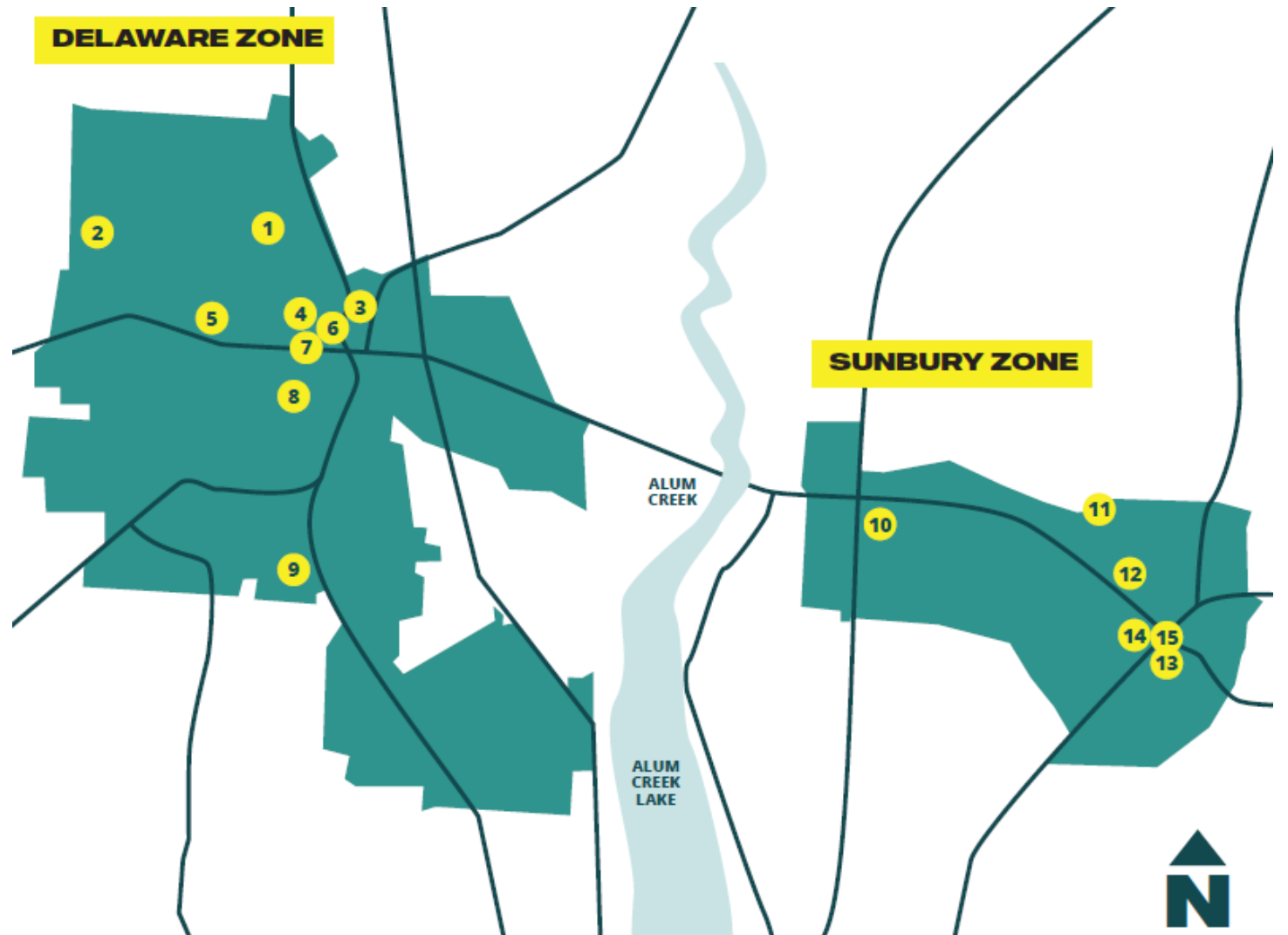
- Same-day service within a geographic area e.g. City of Delaware, and Sunbury
- \$2 one way, with discounts for youth, elderly and disabled passengers

Demand Response Service

- “Countywide” *next day* service
- Tiered fare system based on mileage:
 - 0 – 10 miles: \$8
 - 11 – 20 miles: \$17
 - >20 miles: \$29

Popular Destinations

1. Delaware County Fair Grounds
2. Kroger N. Houk Road
3. Mingo Park
4. Strand Theatre
5. Grady Memorial Hospital
6. Delaware County Library
7. Downtown Delaware
8. Ohio Wesleyan University
9. Kroger Columbus Pike
10. Tanger Outlet Mall
11. Big Walnut High School
12. Hitachi Astemo
13. Ohatshi Technica
14. Kroger W. Cherry
15. Sunbury Public Library



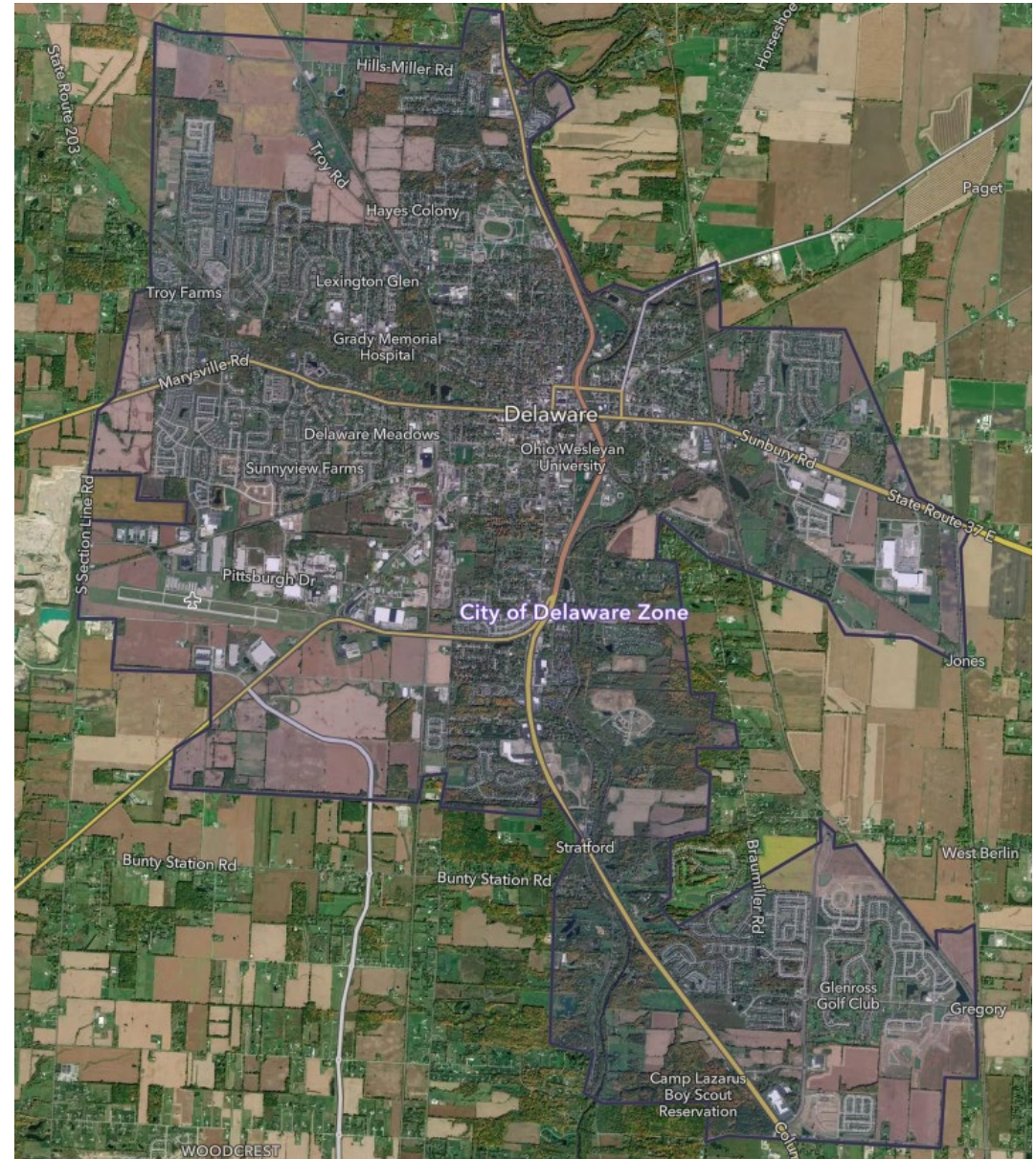
City of Delaware FLEX

Ridership Statistics

- January: 9,663
- February: 9,387
- March: 8,987
- April: 9,399
- May: 9,326
- June: 7,926
- July: 10,874
- August: 11,366
- September: 11,094
- October: 12,905
- November: 11,492

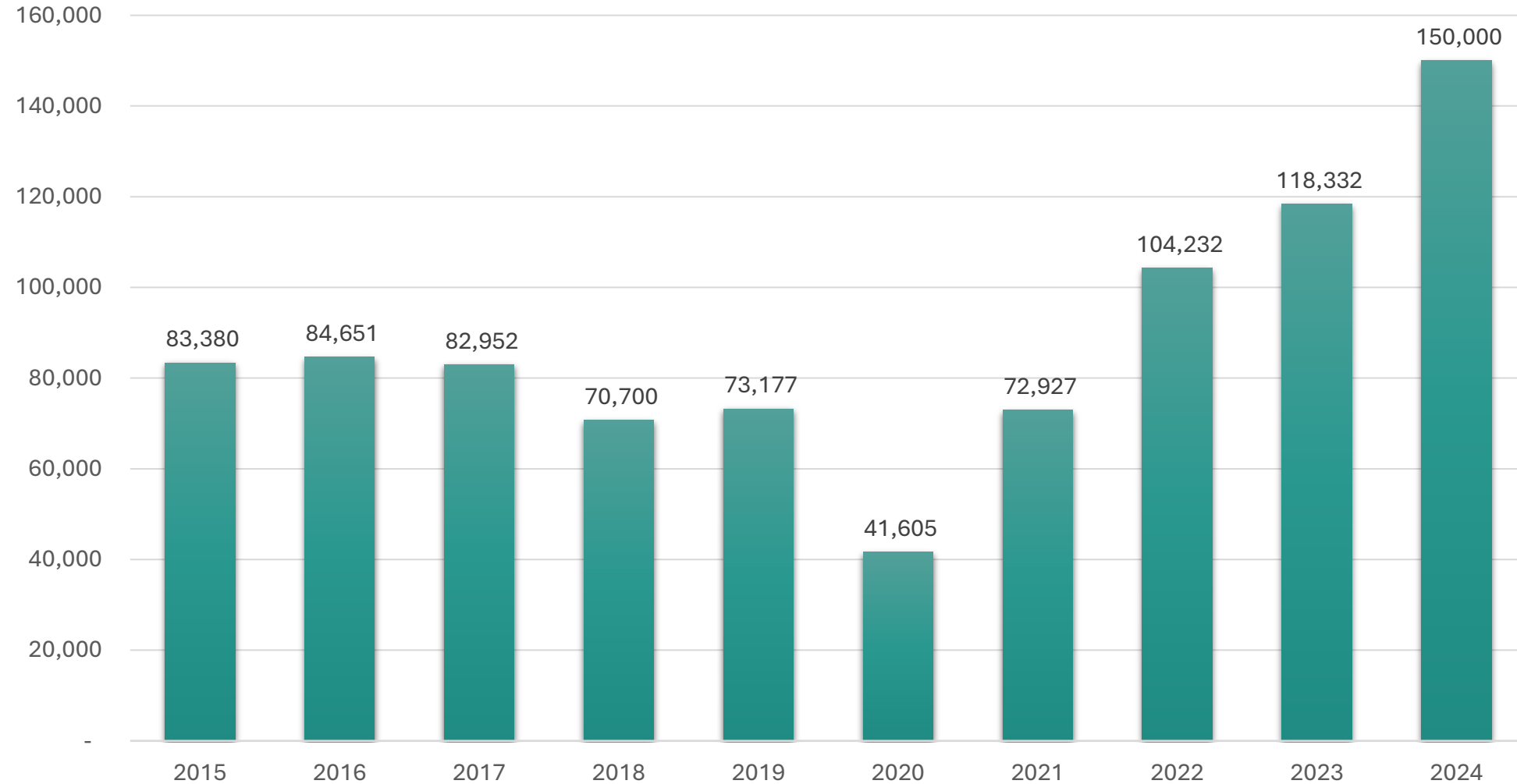
YTD Ridership: 112,420

**Monday – Friday: 5 am - 9 pm;
Saturday: 8 am - 4 pm**



Ridership Increase

Ridership from 2015 - 2024



What's Next?



Model Results

Growth by TAZ from 2021 - 2050

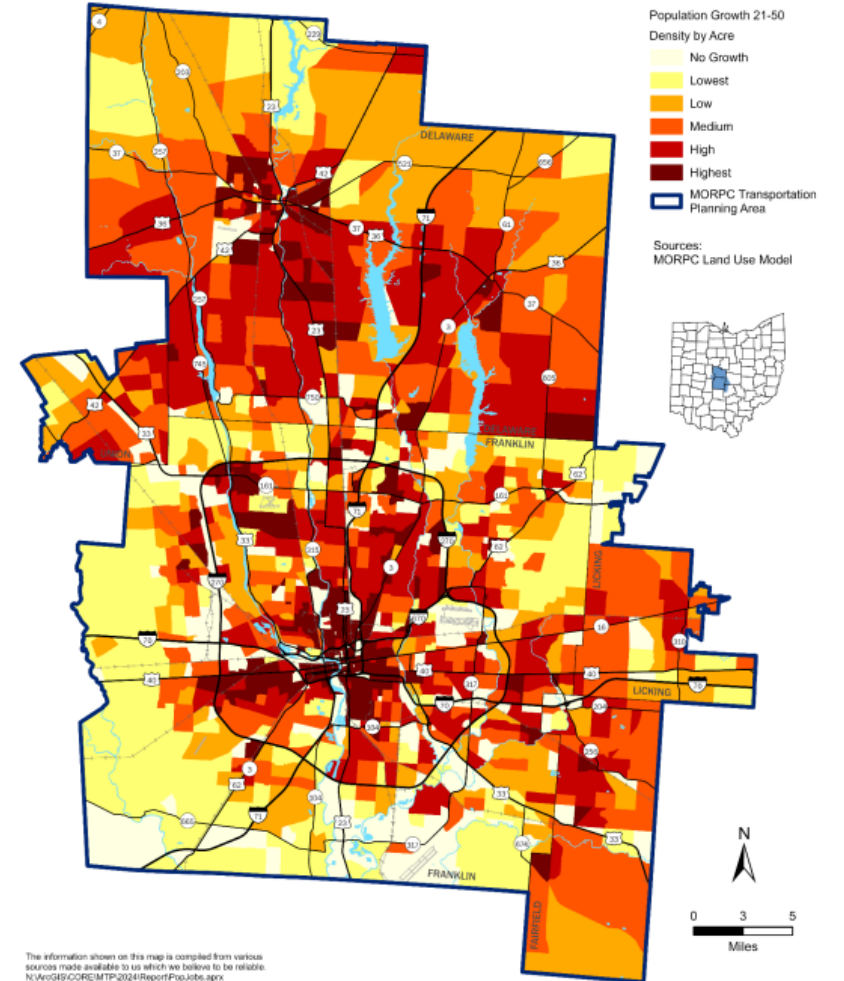


Figure 22. Population Change by Traffic Analysis Zones

2024 - 2050 Metropolitan Transportation Plan Land Use Appendix

Thank you!

