

Hamilton County Office Of Reentry

Trina Jackson, Director

Who is HCOR

Established in 2011 by the Hamilton County Commissioners to disrupt the cycle of incarceration.

The Office is supported by the Hamilton County Commissioners and the Family Treatment and Services Levy.



Hamilton County
**Office of
Reentry**

WHO WE SERVE

- Justice impacted men and women
- Average age: 31-45
- Predominately African-American males
- Approximately 56% of clients on community control
- Approximately 86% have a felony (33% violent felony)
- Most frequent needs: Housing & Employment

OUR WHY

WE BELIEVE PEOPLE DESERVE
MULTIPLE OPPORTUNITIES TO
BREAK THE CYCLE OF
INCARCERATION BY BUILDING
COMMUNITY CONNECTIONS
AND EDUCATING THOSE
AROUND US ON THE
IMPORTANCE OF REENTRY

OUR WHY

- Formerly incarcerated men are almost twice as likely to have been homeless.
- 50% of justice impacted individuals face housing instability.
- 63% of formerly incarcerated persons report living in 2,3,4 or 5 places within the first year of release.
- Nearly 40,000 laws restrict people with records from employment, stable housing, education and other supports that would prevent post-incarceration poverty.

The Hamilton County Office of Reentry provides coordination of care to justice impacted residents.

Services:

- Life skills coaching
- Employment referrals
- Job retention coaching
- Food & clothing referrals
- Assistance with vital records

Services:

- Medical and dental care referrals
- Education support
- Child Support modification
- Mental health and addiction assistance

OUR ROLE

Our Approach

Direct client engagement

- Daily client support and reentry planning

Programming – All programs employ evidence-based practices

- Reentry Pod (Pre-Covid) 2020 NaCO award winner
- Preparing Incarcerated Women for Sustainable Careers
- Probation Call-ins

Judicial engagement

- Welcome Home Reentry Docket
- Municipal Reentry Docket

Advocacy

- Housing – Reentry Housing Model
- Access to resources – One Stop Resource Center

Programming – Reentry Pod

- Pre-release planning to connect inmates at the Hamilton County Justice Center to community resources prior to release. The Reentry Pod housed sixteen male mid to high level offenders.
- 2020 NACo Award Winner for Innovation
- 157 Participants 2017-2020
- 11% Recidivism – Twelve months from release



Programming- Women in Reentry



Preparing Incarcerated Women for Sustainable Careers

- Private-public partnership.
- 5-cohorts between 2018-2023.
- Sponsorship for sober living, residential treatment and other programming.

Programming – Probation Call-ins

- Pilot project with Hamilton County Probation Department.
- Discussions held in the community.
- 33 participants – 2 new offenses.

Judicial Engagement

Welcome Home Reentry Docket

Common pleas Court Judge

Wende Cross

Established 2023

12-18 Month Program

Reentry plan becomes conditions of
probation

10 participants, 4 graduates released from
probation to date

Municipal Reentry Docket

Municipal Court Judge

Andre Johnson

Established 2024

Reentry plan becomes conditions of
probation

12 participants, 5 participants released
from probation due to compliance



Prison Visits



Advocacy – Access to Resources

One Stop Resource Center

- Created to eliminate barriers to accessing supportive services that improve quality of life and provide essential support to families.
- The goal is to offer our community access to service providers each month at the same location for assistance related to vital records, personal identification, substance abuse and mental health care, child support concerns, housing, employment, record sealing or expungement, and health care.

2024 Participation: 547; 1,632 Since 2021

42% have prior conviction



Challenge #1

Housing Affordability in Hamilton County

An analysis of households, housing affordability, and housing subsidy in Hamilton County and Cincinnati, Ohio

February, 2017

LISC
Greater Cincinnati & Northern Kentucky

Community Building Institute A PARTNERSHIP BETWEEN **XAVIER UNIVERSITY** and **United Way**

Executive Summary

A Growing Housing Need

The number of Hamilton County households in poverty has grown by 40% since 2000. Over the same period, the number of HUD-subsidized units has decreased slightly. There are also more Low Income Housing Tax Credit (LIHTC) units in the County than in 2000, but many times these units overlap with HUD-subsidized units. Overall, the availability and affordability of housing has not kept pace with the rise in poverty.

Category	2000	2014
Households in Poverty	41,587	58,046
HUD Subsidized Units	25,862	25,328
LIHTC Units	4,358	5,861

Change in Number of Units, 2000-2014
Hamilton County

The Affordable and Available Housing Gap

For every 100 of the lowest income households in Hamilton County, there are only 28 units of housing that are both affordable and available. This equates to an approximate gap of 40,000 units for those households making \$14,678 or less (30% of Hamilton County's median income).

Household Income	Units per 100 Households
\$14,678 or less	28
\$24,464 or less	58
\$31,142 or less	90
\$48,927 or less	99
\$58,712 or less	102

Housing Cost Burden

Nationally and locally, households are burdened by the high cost of housing. Many pay more than 30% of their income for housing, leaving little to pay for food, transportation, health care and other basic needs. Throughout Hamilton County this is particularly pronounced among extremely low income households. Three quarters of these households spend more than 30%, or more than 50%, of their income on housing, making it difficult to pay for other essential expenses.

Cost Burden and Severe Cost Burden, by Census Tract

Extremely Low Income Households in Hamilton County

February, 2017

Housing Affordability in Hamilton County 3

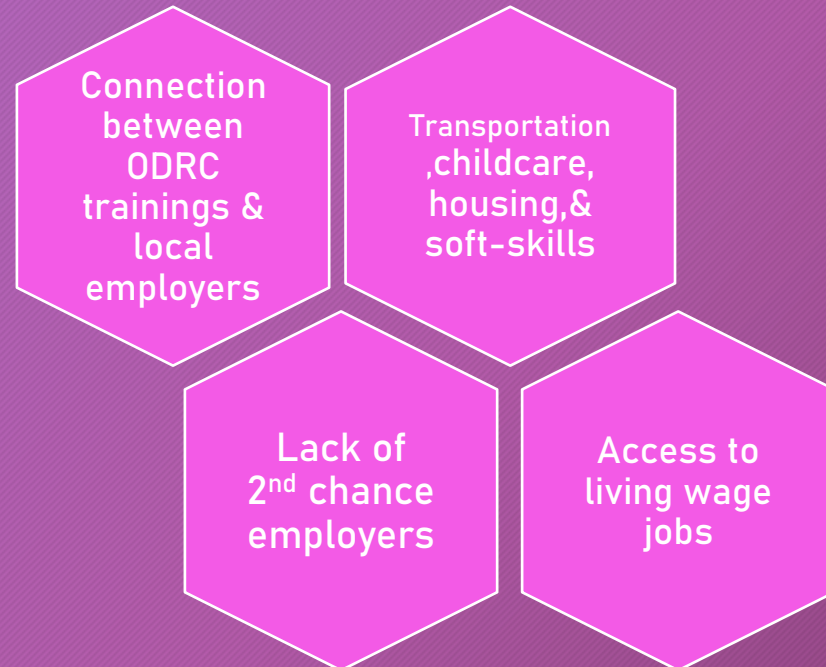
Advocacy - Housing

'This investment will have a profound impact': \$31.8 million available for affordable housing in Hamilton Co.

Hamilton County Commissioners and the Cincinnati Development Fund (CDF) are using money from the American Rescue Plan

While funding applications are open to all developers, a portion of the money will be specifically targeted towards seniors, disabled residents and returning citizens or people who were previously incarcerated, the county said.

Challenge #2 - Employment



THE REENTRY POPULATION

- 1 in 6 Ohioans or over 16% of our available workforce has a criminal background.
- According to the Ohio Justice and Policy Center, economic research suggests that Ohio is losing \$2 billion GDP annually because otherwise qualified workers are excluded by over-restrictive criminal-record-based barriers.”
- Formerly incarcerated people earn far less than the general population (Prison Policy Initiative).
- In regard to the labor shortage, the most impacted industries include (US Chamber of Commerce):
 - Health services
 - Professional & Business Services
 - Trade
 - Accommodation & Food Services

HAMILTON
COUNTY
OFFICE OF
REENTRY

138 E. Court Street
Cincinnati, OH 45202
513-946-4304