

# OhioRISE Overview

## County Commissioners Association of Ohio

## Ohio Job and Family Services Directors' Association

July 30, 2021

Shaun Bracely, Chief OhioRISE Operations, Compliance, & Oversight

[Shaun.Bracely@medicaid.ohio.gov](mailto:Shaun.Bracely@medicaid.ohio.gov)

Autumn Darnell, Chief OhioRISE Policy and Program Development

[Autumn.Darnell@medicaid.ohio.gov](mailto:Autumn.Darnell@medicaid.ohio.gov)

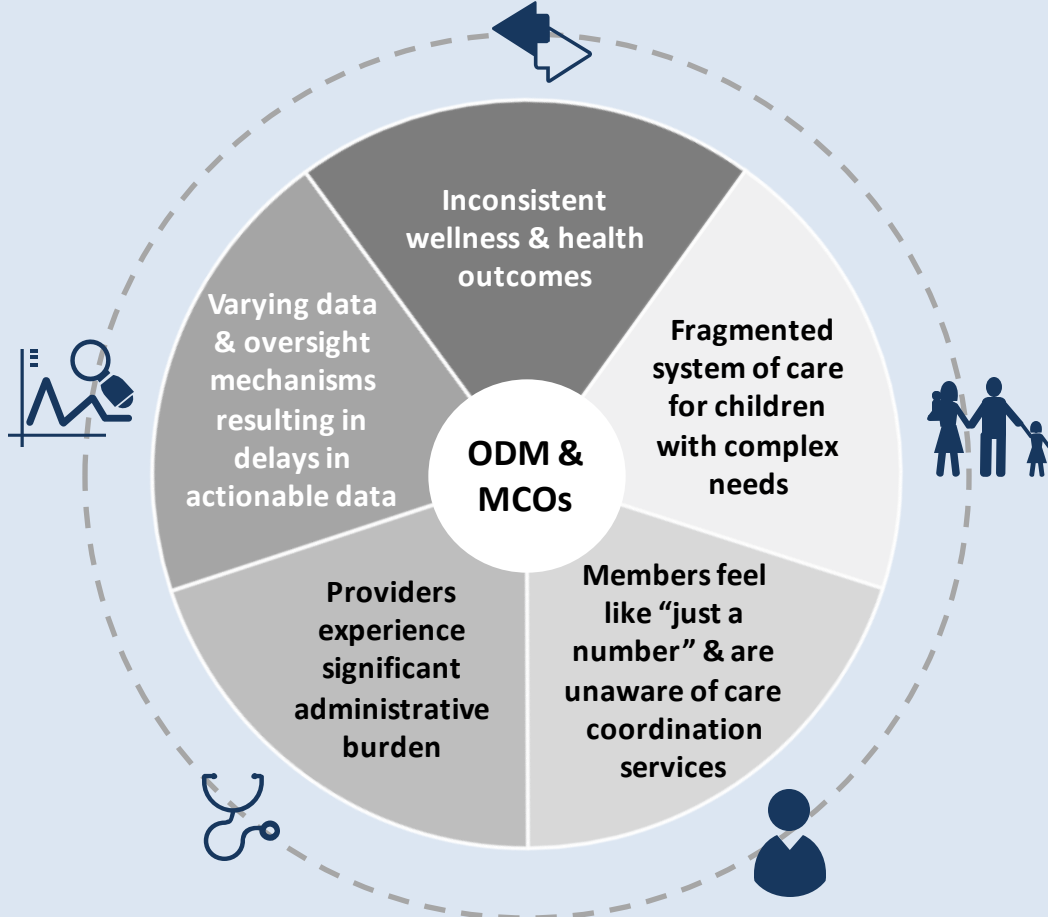
Kelly Smith, External Affairs, OhioRISE

[Kelly.Smith@medicaid.ohio.gov](mailto:Kelly.Smith@medicaid.ohio.gov)

# Ohio's Next Generation of Managed Care

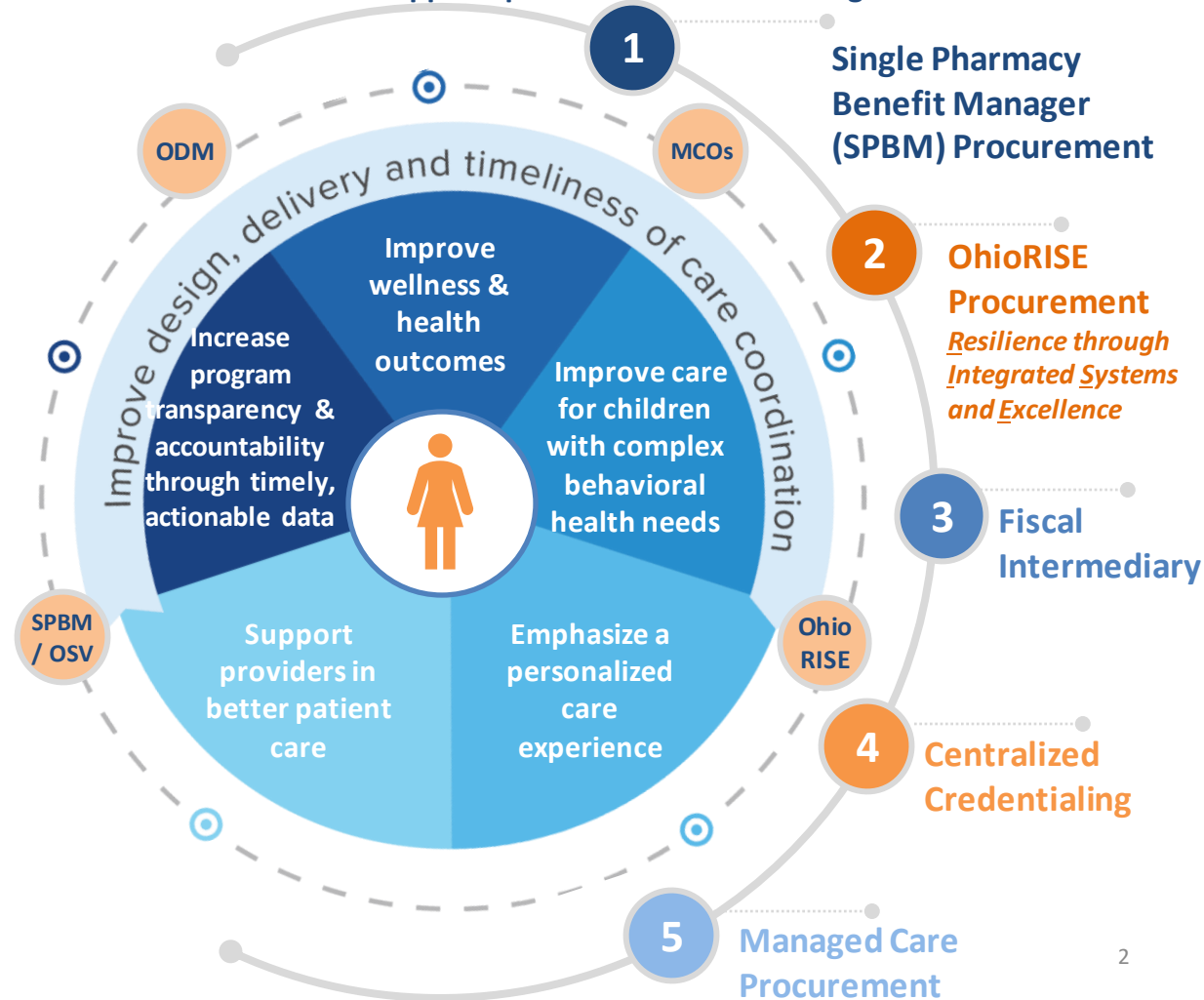
## Today's Ohio Medicaid Managed Care Program

Members are impacted by business decisions that don't always take their needs or circumstances into consideration. Providers are not always treated as partners in patient care. We want to do better for the people we serve.




## "Next Generation" of Managed Care in Ohio

The focus is on the individual with strong coordination and partnership among MCOs, vendors & ODM to support specialization in addressing critical needs.



# The Next Generation of Medicaid

OhioRISE (Resilience through Integrated Systems and Excellence)



*Focus on the*  
**INDIVIDUAL**  
*rather than the  
business of  
managed care*

*We want to do better for the people we serve*

## The OhioRISE Procurement...

- Aligns with the mission and next generation of managed care and is in support of the Governor's Children's Initiative
- Supports the most vulnerable children in the State of Ohio who need specialized and targeted behavioral health supports and services
- Moves the behavioral health system from out-of-home placements to community care, providing support where youth and young adults live

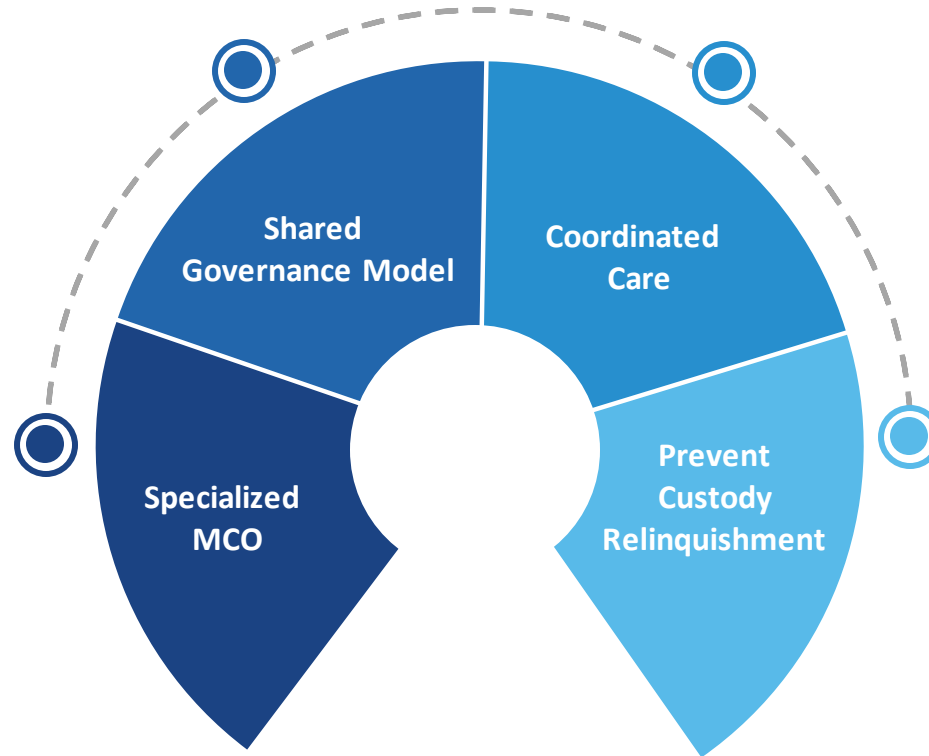
# Ohio Resilience through Integrated Systems and Excellence

## Shared Governance Model

OhioRISE features **multi-agency governance** to drive towards improving cross-system outcomes – we all serve many of the same kids and families

## Specialized MCO

ODM selected Aetna Better Health of Ohio to serve as a special type of managed care plan – a **prepaid inpatient health plan (PIHP)** – to ensure financial incentives and risk sharing are in place to drive appropriate use of high-quality behavioral health services



## Coordinated and Integrated Care and Services

OhioRISE **brings together** local entities, schools, providers, & families as a part of our approach for improving care for enrolled youth

## Prevent Custody Relinquishment

OhioRISE will utilize a new **1915c waiver** to target the most in need and vulnerable families and children to prevent custody relinquishment

# OhioRISE Eligibility & Enrollment CANS Functional Assessment Tool

# Eligibility for OhioRISE

**Children must meet all of the criteria below**

## **Medicaid Eligible**

In FFS or managed care for physical health benefits  
May also have an existing 1915(c) waiver - I/DD or Ohio Home Care

## **Children <21 Years of Age**

## **Require Significant BH Services**

In need of intensive community services or out-of-home services

## **Meet Functional Needs Criteria**

As assessed by the Child and Adolescent Needs and Strengths (CANS)





ODM anticipates OhioRISE enrollment between 50,000 and 60,000 children and youth by the end of year 1.

# OhioRISE 1915(c) Waiver

## WHAT IS A WAIVER?



## WHY IS A 1915(C) WAIVER NEEDED FOR THE OHIORISE PROGRAM?

-  Medicaid “waivers” allow states to “waive” a part of the social security act to **gain flexibilities** in implementing their Medicaid programs
-  Home and Community-Based Services 1915(c) waivers are used by states to help people who need and want to **receive long term services and supports (LTSS) in their homes and communities**, rather than in institutions
-  Waivers need to be **submitted** to and **approved** by CMS
-  1915(c) Waiver programs generally operate on a **five-year waiver renewal cycle**



The OhioRISE 1915(c) Waiver will help **prioritize youth** who need behavioral health services into the program who are at **risk of custody relinquishment and institutionalization**



Allow a pathway for children and youth to be considered for a **special income limit (SIL) for Medicaid**



Provide **additional and targeted services** for those children with the greatest needs

# What is a CANS Assessment?

## The **Child and Adolescent Needs and Strengths (CANS)**

is a functional assessment tool that:

- Assesses both child and family **needs and strengths**
- Provides **decision support** to identify appropriate approaches
- Used to support OhioRISE **care planning**

## CANS for OhioRISE

OhioRISE will use CANS to:

1. **Determine program eligibility**
2. **Recommend a tier of care coordination:**
  - Tier 1: Limited Care Coordination
  - Tier 2: Moderate Care Coordination
  - Tier 3: Intensive Care Coordination
3. **Recommend out of home treatment settings:**
  - QRTP / Mental Health Residential Tx
  - SUD Residential Tx
  - ICF with IBS Rate Add On
  - Psychiatric Residential Treatment Facility (PRTF)

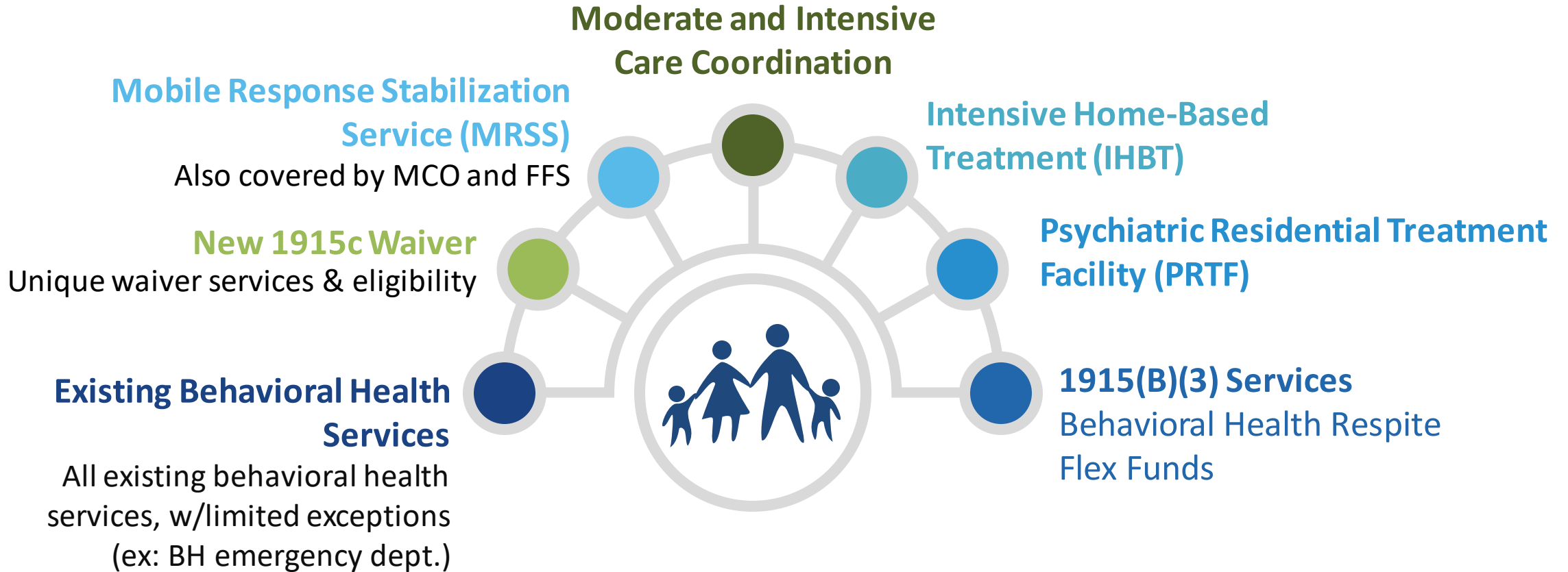


# CANS Cross-System Functionality

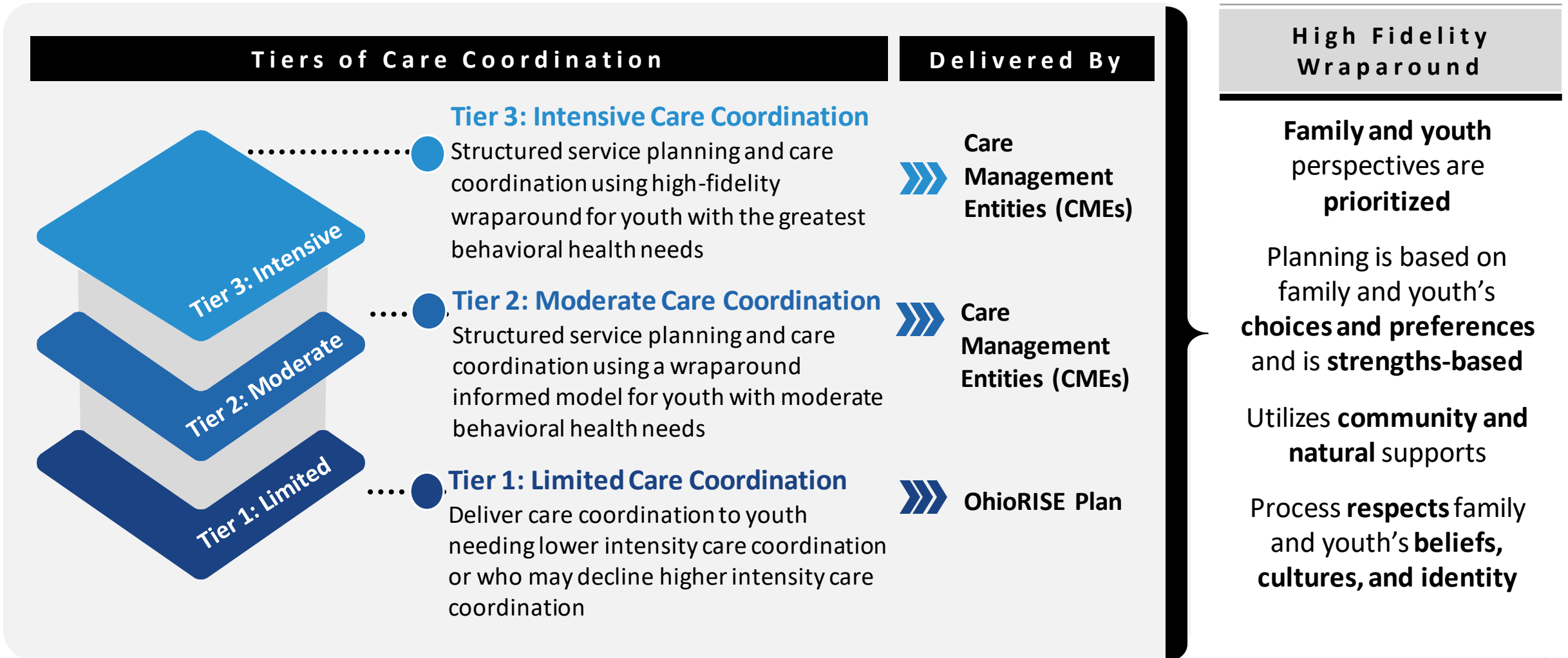
System	CANS	
OhioRISE	Initial eligibility for: <ul style="list-style-type: none"> <li>• OhioRISE program</li> <li>• 1915(c) waiver</li> </ul>	<ul style="list-style-type: none"> <li>• Care planning</li> <li>• Ongoing assessment</li> <li>• Monitoring of individual and population outcomes</li> <li>• ODM quality improvement and population health activities</li> </ul>
ODJFS/FFPSA	QRTP level of care	
DODD/ICF	ICF-IBSRAO eligibility and redetermination (every 6 months)	<ul style="list-style-type: none"> <li>• Care planning</li> <li>• Transition planning</li> </ul>
Others – DYS, OMHAS, FCFC	MRSS, IHBT, QRTP requirements	<ul style="list-style-type: none"> <li>• Care planning</li> <li>• Ongoing assessment</li> <li>• Monitoring of individual and population outcomes</li> </ul>

# **New and Enhanced OhioRISE Services and Care Coordination**

# OhioRISE New & Enhanced Services



# Care Coordination is Guided by High Fidelity Wraparound Principles



# What's a Care Management Entity (CME)? Why Create a Network?

## CMEs Defined

**CMEs are local community agency that will contract with the OhioRISE plan to provide moderate and intensive care coordination to enrolled kids**

- CMEs and their care coordinators serve as the local “locus of accountability” for children with complex challenges and their families who are involved in navigating multiple state systems.
- Primary responsibilities:
  - Providing and/or coordinating the provision of individual services to children and families
  - Helping kids and families plan for and access Medicaid services, natural supports
  - Working with the OhioRISE plan and other partners to improve individual and system outcomes

## CME Network Approach

**A network approach is critical to achieve our intended outcomes for the OhioRISE system**

- Children, families, and other system partners need a “go-to” place to help families, providers, and other community partners navigate a complex and often confusing multi-system environment.
- Developing a network allows us to concentrate our efforts:
  - Alignment of resources and supports to develop a robust network that can meet the aims of the model.
  - Focus experience and processes for interactions with other system partners
  - Align community resource development
  - Provide high-quality services and supports to the limited number of children in the program.

# Stakeholder Engagement

# OhioRISE Advisory Council & Workgroups – Membership and Purpose

## Purposes of the OhioRISE Advisory Council & Workgroups

- » Offer specific advice, expert opinions and suggestions to Directors and staff regarding the OhioRISE program
- » Provide clinical and programmatic input on key components of new and enhanced services
- » Review rule development and changes
- » Provide critical technical feedback regarding initial implementation activities and OhioRISE operations



### MEMBERS SELECTED FOR THE ADVISORY COMMITTEE WILL REPRESENT:

Diverse range of expertise and experience

Local system partners

Associations and providers of services

Youth and Families with lived experience


Ohio's geography

# OhioRISE's Advisory Council and Workgroups

## What We've Accomplished to Date\*

 **29**

Advisory Council (AC) and Workgroup Meetings facilitated since January

 **70-100+**

Average number of attendees in every AC and Workgroup meeting

 **24**

Rules sent for public comment (more rules to be shared)

 **400+**

Comments received on OHR service rules from the AC and Workgroup members

## What's Next

- Continue PRTF Workgroup
- Pilot CANS tool
- CANS Training
- Commence Implementation and Operations Workgroups

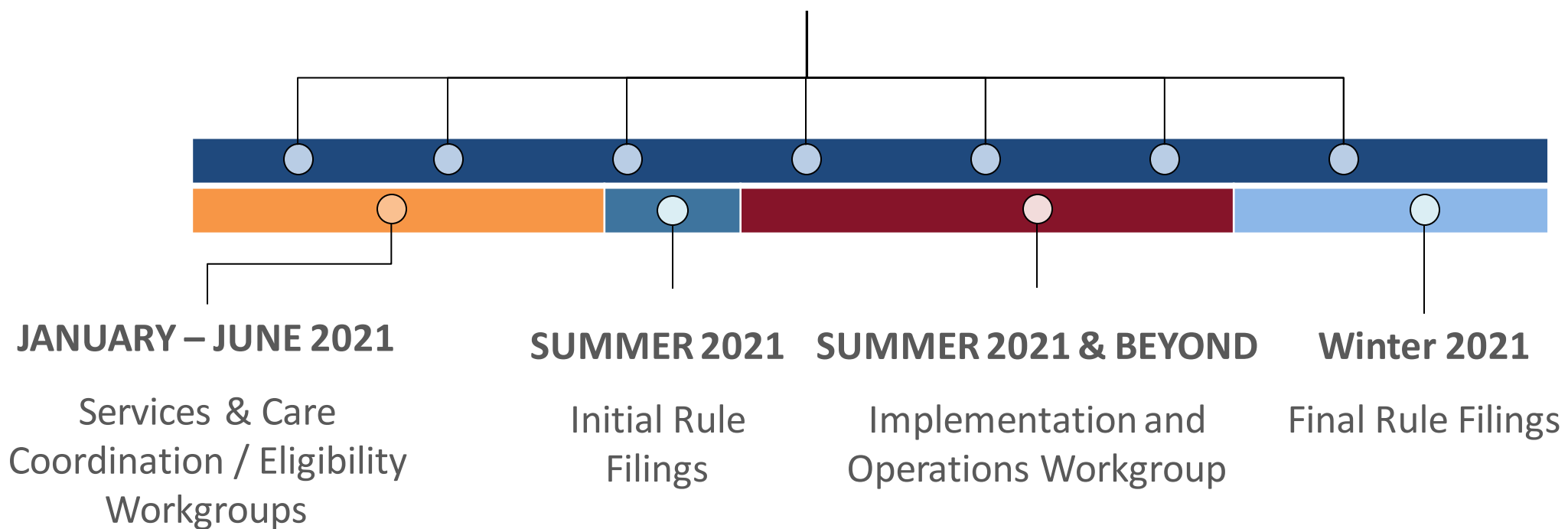
\*From January 1, 2021 – July 23, 2021



# OhioRISE Stakeholder Timeline

JANUARY 2021 - TBD 2022

OhioRISE Advisory Council Meetings



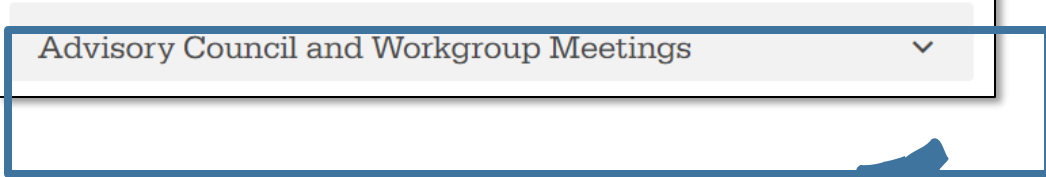
# OhioRISE Website

On the [OhioRISE website](#) we post the dates and times of future meetings, links to join the meetings, and presentation materials.

## OhioRISE Advisory Council and Workgroups

Beginning in 2021, OhioRISE Advisory Council and Workgroup meetings will commence. The purpose of these meetings is to engage with stakeholders to obtain critical feedback and expert advice for OhioRISE's services and operations. You can find the members selected to be in the Advisory Council [here](#) and the presentation for the kickoff OhioRISE Stakeholder meeting on December 18, 2020 [here](#).

Please select the 'Advisory Council and Workgroup Meetings' dropdown tab below to view presentation materials and meeting registration links.



Select **'Advisory Council and Workgroup Meetings'** dropdown tab

Advisory Council and Workgroup Meetings ^

Meeting Name (Link to Materials)	Date	Time	Registration Link
<a href="#">OhioRISE Advisory Council Meeting</a>	01/11/2021	12:00 - 1:30 PM EST	Registration Has Closed
<a href="#">MRSS Workgroup</a>	01/22/2021	12:00 - 1:30 PM EST	Registration Has Closed
<a href="#">CANS &amp; Care Coordination Workgroup</a>	01/28/2021	12:00 - 2:00 PM EST	Registration Has Closed
<a href="#">Advisory Council Meeting</a>	02/09/2021	9:00 - 11:00 AM EST	Registration Has Closed
<a href="#">MRSS Workgroup</a>	02/09/2021	1:30 - 3:30 PM EST	Registration Has Closed
<a href="#">CANS and Care Coordination Workgroup</a>	02/11/2021	12:00 - 2:00 PM EST	Registration Has Closed
<a href="#">IHBT Workgroup</a>	02/19/2021	2:30 - 4:30 PM EST	Registration Has Closed
<a href="#">CANS and Care Coordination Workgroup</a>	02/25/2021	12:00 - 2:00 PM EST	Registration Has Closed
<a href="#">Advisory Council Meeting</a>	03/09/2021	9:00 - 11:00 AM EST	<a href="#">Click here to join the meeting - Registration not required</a>

Access meeting presentations by clicking on the **'Meeting Name (Link to Materials)'**

Join meetings by clicking on the meeting links in the **'Registration Link'**